

**SOFT
LINE**



DRUM POUF

WWW.BCILIBRARIES.COM



DRUM



Pouf small
Art. no.: 2-195xxx



Pouf large
Art. no.: 2-197xxx



Pouf high
Art. no.: 2-196xxx



Tray small
Art. no.: 2-19500x



Tray large
Art. no.: 2-19700x

Description:

How may we serve you?

Pouf, coffee table and tray in one. The multifunctional DRUM are perfect for the modern living space where flexibility is key. Put the tray on top of the pouf for a stylish coffee table and remove it if you need an extra seat or a leg rest. A decorative, functional piece of furniture. The tray comes in black, white, ash and walnut.

Year of design: 2009

Function:

DRUM can be used as comfortable seating, as a practical table tray that is easy to move around as required, or use the tray on its own for serving.

Features:

Pouf and tray...

The thinking behind DRUM is a decorative, functional piece of furniture with scope for different applications.

DRUM can be used as comfortable seating, as a practical table that is easy to move around as required, or use the tray on its own for serving.

The poufs are available in three different sizes and are supplied in different fabrics. There are two different sizes of tray, in black, white and walnut.

Design: SOFTLINE DESIGN TEAM

Innovation and design are fundamental to SOFTLINE furniture, and we pride ourselves on working with leading international designers. We value design and the creation of unique and functional furniture for beautiful homes all over the world. SOFTLINE develops all its products in close cooperation with our team of young and established designers. We aim to meet our customers' demand for modern and flexible designer furniture.

DRUM

Dimensions (cm):

	Pouf small	Pouf large	Pouf high	Tray small	Tray large
Art. No.:	2-195xxx	2-197xxx	2-196xxx	2-19500x	2-19700x
Diameter:	45 17.7"	60 23.6"	45 17.7"	47 18.5"	62 24.4"
Height:	30 11.8"	30 11.8"	40 15.75"	7.4 2.9"	7.4 2.9"
Packing Dimensions:	45x45x30	60x60x30	45x45x40	52.5x51.5x9	68x66.5x9
Volume:	0.06 m ³ 2.1Cu Ft	0.11 m ³ 3.9Cu Ft	0.08 m ³ 2.8Cu Ft	0.02 m ³ .7 Cu Ft	0.04 m ³ 1.4Cu Ft
Weight (net):	1.58 kg	2.88 kg	2.38 kg	1.55 kg	2.85 kg
Weight (gross):	1.75 kg 3.85lbs	3.05 kg 6.7lbs	2.55 kg 5.6lbs	2.15 kg 4.7lbs	3.65 kg 8 lbs

Additional Information:

Packing

Poufs: Plastic foil 160 µm.

Table trays: Card board.

Cleaning

Poufs:

Brushing and vacuum-cleaning and chemical dry-cleaning of removable cover.

Trays:

Clean with damp cloth.

Elements

Pouf small Ø 45x30.5 cm.

Pouf large Ø 60x30.5 cm.

Pouf high Ø 45x40 cm.

Tray small Ø 46.4x7.4 cm.

Tray large Ø 61.2x7.4 cm.

Materials

Poufs:

30 kg/m³ high elastic PU cell-foam.

PU cell-foam tested acc. to Ökotex 100.

Trays:

MDF and plywood.

Colours: white, black, walnut.



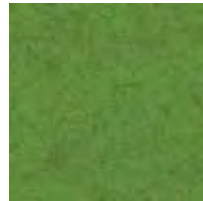
SOFTLINE SEATING

Felt Colors

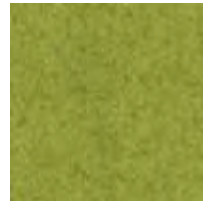
WWW.BCILIBRARIES.COM



579



*848



*855



*847



624



588



622



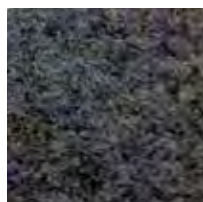
581



*858



582



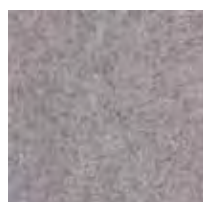
*846



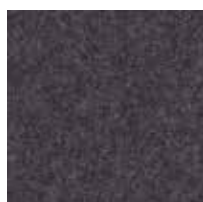
629



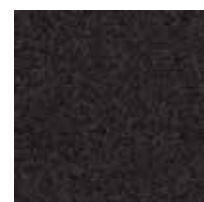
*859



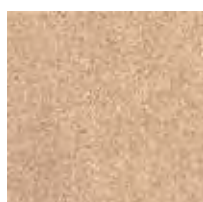
*620



*623



*610



*619



*849



*635



636

Composition: 80% Wool, 20% Polyamide (* 70% Wool, 25% Polyamide, 3% Acrylic, 2% Polyester)

SOFTLINE SEATING

Valencia Colors

WWW.BCILIBRARIES.COM



258



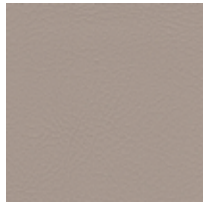
265



266



267



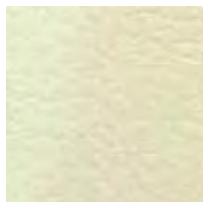
268



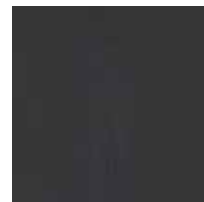
264



269



262



259



 BCI

