



**SOFT  
LINE**

**SHELLY**

[WWW.BCILIBRARIES.COM](http://WWW.BCILIBRARIES.COM)



## SHELLY



Chair  
Art. no.:  
2-582

### Description:

#### **A cozy protected feeling**

The upholstered shell of SHELLY embraces you and creates a cozy, protected feeling. Perfect for private and corporate use.

Year of design: 2012

### Function:

A comfortable chair with design that easily can be combined with different kinds of furniture. Shelly is easy to move around as needed.

Can be combined elegantly with many kinds of furniture.

Timeless.

Comfortable and high quality.

A chair is easy to move around.

Many fabric qualities and colours provided.

A removable cover for cleaning or to be changed.

### Design: Matthias Demacker

Matthias Demacker was born in southern Germany in 1970. He studied design at FH Niederrhein in Krefeld and at the same time worked with a number of different architects' studios on trade fair exhibition stands. After graduating, he moved to Munich, worked for a number of interior design studios and in 2003 set up his own. He has received many acknowledgements at an international level, such as the Interior Innovation Award, a nomination for the German Design Award (both in 2005), the Red Dot Award in 2007 and the Good Design Award in 2010. His vision for design: 'make it special, but keep it simple'.



## SHELLY

### Dimensions (cm):

	Chair	
Art. no.:	2-58	
Length:	2 64	21.2"
Depth:	52	20.4"
Height:	74	29.1"
Seat height:	46	18.1"
Seat depth:	46	18.1"

### Packing info

Packing dimensions: 77.5 x 66 x 66 cm (30.5" x 26" x 26")

Volume:	0.34 m <sup>3</sup>	
Weight (net):	20.50 kg	45.2 lbs
Weight (gross):	24.03 kg	53 lbs

### Additional Information:

#### Cleaning

Brushing and vacuum-cleaning with daily cleaning.

A removable cover can be dry-cleaned and changed.

#### Upholstery

Arm and backrest:

55 kg/m<sup>3</sup> high elastic polyurethane cell foam with 100 g fibre.

Seat:

35 kg/m<sup>3</sup> cold cure foam with 100 g fibre.

Polyurethane cell foam tested referring to Øko-tex 100.

#### Frame

Steel.

#### Legs

Tube Ø 5 cm (2") stainless steel.

Base Ø 5 x 46 cm (18") stainless steel.



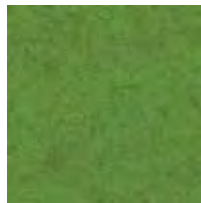
# SOFTLINE SEATING

Felt Colors

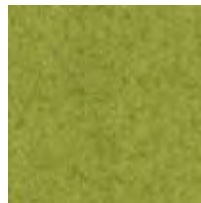
[WWW.BCILIBRARIES.COM](http://WWW.BCILIBRARIES.COM)



579



\*848



\*855



\*847



624



588



622



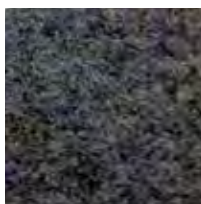
581



\*858



582



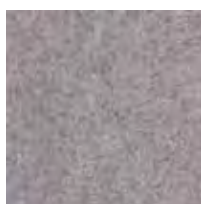
\*846



629



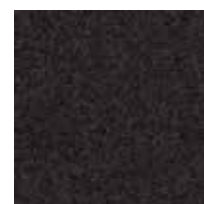
\*859



\*620



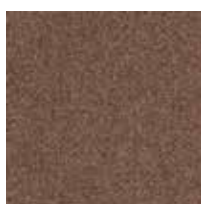
\*623



\*610



\*619



\*849



\*635



636

Composition: 80% Wool, 20% Polyamide (\* 70% Wool, 25% Polyamide, 3% Acrylic, 2% Polyester)

# SOFTLINE SEATING

Valencia Colors

[WWW.BCILIBRARIES.COM](http://WWW.BCILIBRARIES.COM)



258



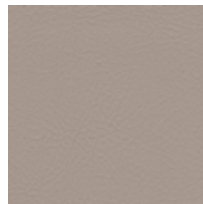
265



266



267



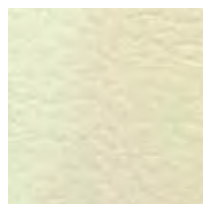
268



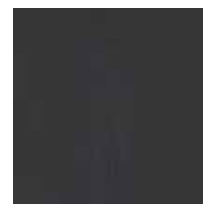
264



269



262



259

Composition: 100% Vinyl / Backing: 100% Polyester



 BCI



[www.bcilibraries.com](http://www.bcilibraries.com)  
877 224 7026